

# Plastique Nacré

Utilisation : Décorations, tentures, packaging...

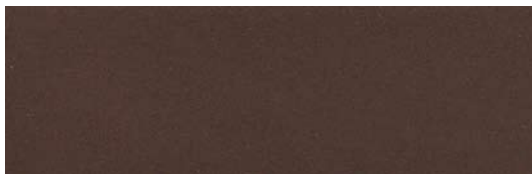


Réf. : 7350

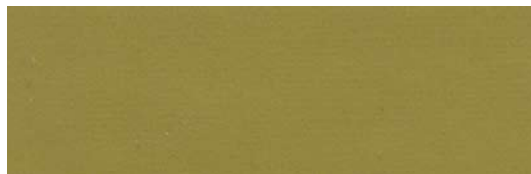
M2

## 7350 PLASTIQUE NACRÉ

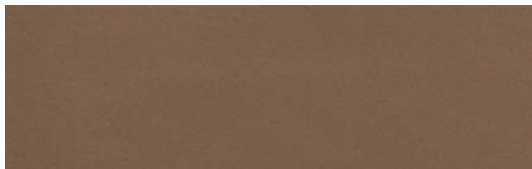
Larg/Width/Breite : 1,40 m  
Composition : PVC 72,5 % / PU 5,5 % / Coton 22 %  
Poids/Weight/Gewicht : 720 g +/- 50g /m<sup>2</sup>  
Col./Colour/Farbe : 12  
Pièce/lenght/Süek : ~ 30 ml  
Classt/Flamb/Certif. : M2



Taupe 44592



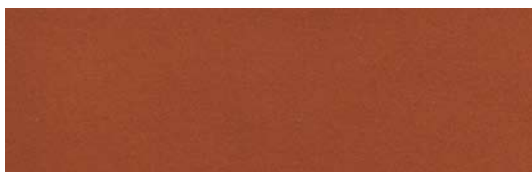
Oxyde 11105



Pépite 63134



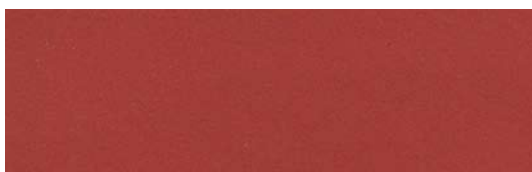
Platine 74680



Cuivre 21756



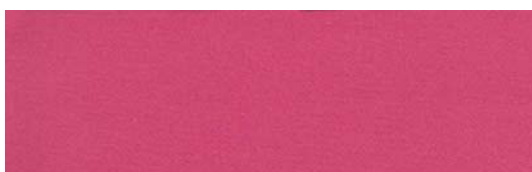
Laurier 11104



Cornaline 21757



Azurite 31859



Pink 90243



Violine 90242



Rubis 21755



Marine 31858

**LONDON**  
**Varia Textiles Ltd.**  
Tél. : +44/208 549 85 90  
Fax : +44/208 549 82 90  
e-mail : variagb@gmail.com  
www.variauk.com

**MIAMI**  
**Vitvaria USA Inc**  
Tél. : +1/305 865 0772  
Fax : +1/305 865 0772  
e-mail : josef@vitvaria.com  
www.vitvaria.com

**MUNCHEN**  
**Varia bei Karl Leuthenmayr**  
Tél. : +49/(0)89 22 04 54  
Fax : +49/(0)89 291 36 87  
e-mail : varia@varia-int.com  
www.varia-int.com

**PARIS**  
**Varia France**  
Tél. : +33(0)1 42 09 53 96  
Fax : +33(0)1 42 05 75 18  
e-mail : varia@varia.fr  
www.varia.fr

 **varia**  
FRANCE  
*La griffe du non feu*